



jordan fishwick

45 Bourne Street, SK9 5HA
Guide Price £395,000



Bourne Street Wilmslow SK9 5HA

Guide Price £395,000



NO CHAIN. Jordan Fishwick are delighted to present this fantastic opportunity to purchase a well proportioned three bedroom home in a popular south Wilmslow location, close to local shops on Chapel Lane, local primary schools and Lindow Common. For those requiring useful commuter links the train station offers a direct route to London and there is easy access to motorway networks and Manchester International Airport. Internally, the property offers a private entrance hallway, sizable living room offering an excellent sociable space and a modernised kitchen diner which features UPVC French doors to the rear. The kitchen proceeds to boast contemporary wall and base fitted units with complementary wood effect worktops and splashback tiles. There is also an understairs storage cupboard. To the first floor, there are three bedrooms (with additional floor space created in two bedrooms over the side access to the rear garden), one of which benefits from a white two piece ensuite. The stylish family bathroom offers a three piece white bathroom suite with modern splashback tiles surrounding and also features a heated towel rail and frosted UPVC double glazed window.


Externally, to the front of the property there is off road parking space for multiple vehicles and side access to the rear. The private rear garden is mostly laid to lawn but features patio and raised decking, creating ideal space for outdoor furnishings. Viewings Essential.





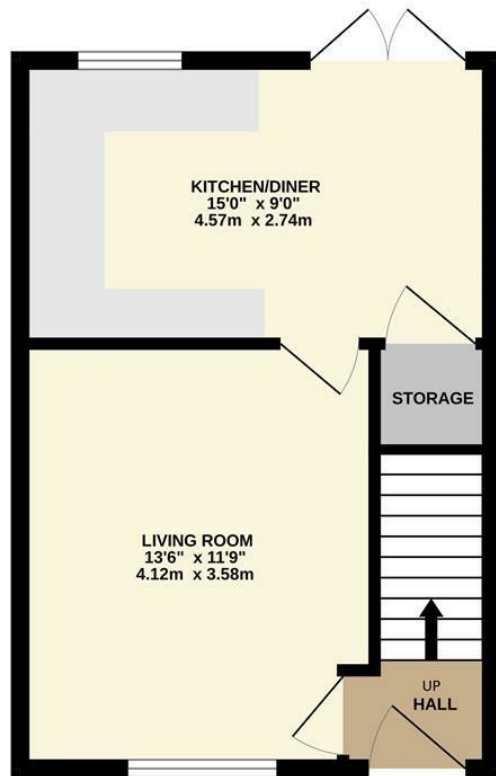
- No Chain
- Three Bedrooms
- South Wilmslow Location
- Mordernised Kitchen Diner
- Stylish Family Bathroom
- Ensuite
- Private Garden To Rear
- Spacious Off Road Parking



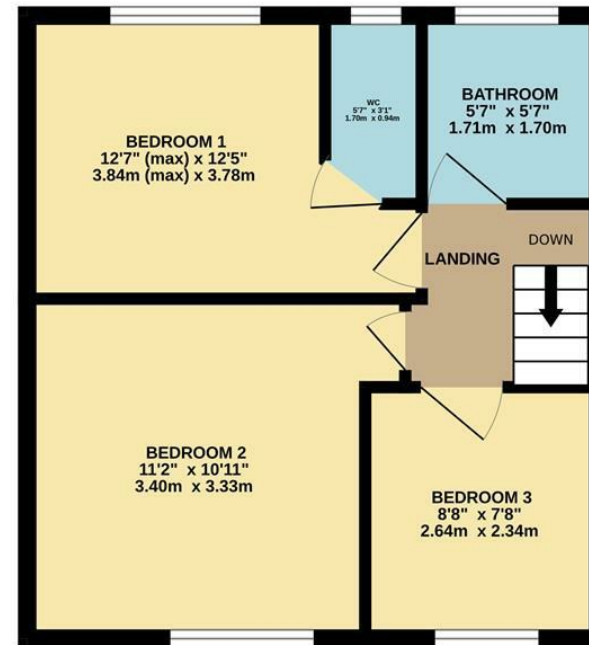
| Energy Efficiency Rating | | |
|---|-----------|---|
| | Current | Potential |
| Very energy efficient - lower running costs | | |
| (92 plus) A | | 90 |
| (81-91) B | | |
| (69-80) C | | |
| (55-68) D | 57 | |
| (39-54) E | | |
| (21-38) F | | |
| (1-20) G | | |
| Not energy efficient - higher running costs | | |
| England & Wales | | EU Directive 2002/91/EC  |



GROUND FLOOR



1ST FLOOR



Measurements are approximate. Not to scale. Illustrative purposes only
Made with Metropix ©2025



These particulars are believed to be accurate but they are not guaranteed and do not form a contract. Neither Jordan Fishwick nor the vendor or lessor accept any responsibility in respect of these particulars, which are not intended to be statements or representations of fact and any intending purchaser or lessee must satisfy himself by inspection or otherwise as to the correctness of each of the statements contained in these particulars. Any floorplans on this brochure are for illustrative purposes only and are not necessarily to scale.

Offices at: Chorlton, Didsbury, Disley, Hale, Glossop, Macclesfield, Manchester Deansgate, Manchester Whitworth Street, New Mills, Sale, Wilmslow and Withington

36-38 Alderley Road, Wilmslow SK91JX
01625 532000

wilmslow@jordanfishwick.co.uk
www.jordanfishwick.co.uk